

OPERATING PROCEDURE

Sensolabo®

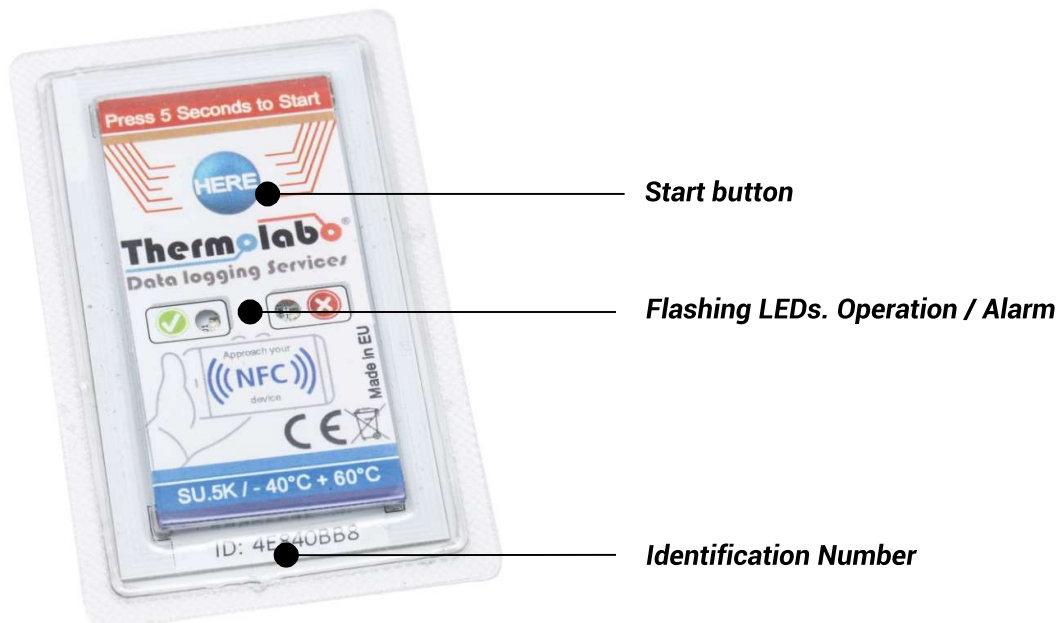
Contactless

THERMOLABO APP



SU+MU-EN +V41

Presentation of Sensolabo® - Contactless Recorder



NFC USB Reader

Sensolabo recorders are designed to operate with the - Thermolabo® - Android dedicated reading application. If the application can not be used, you can order a USB NFC reader and its software environment to access Sensolabo data from a Windows® (PC) computer.

Copyright© 2019 Thermolabo. All rights reserved. Sensolabo® is a registered trademark of Thermolabo SASU.

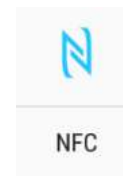
Other brands and product names are registered trademarks or trademarks of their respective owners.

Introduction – GETTING STARTED

1. Activate NFC on your Smartphone

Go to the "settings" menu of your Android Smartphone and activate the NFC.

You can also activate the NFC connection by clicking on the NFC icon on the drop-down menu on your smartphone's home screen.



PDAs and professional grade Android readers equipped with an NFC antenna are also compatible.

You can check using the following link if your smartphone is equipped with NFC:

<http://www.nfcworld.com/nfc-phones-list/>

2. Download Android Application

Once the NFC is activated, simply position the rear of your Smartphone against the recorder.

You will be automatically redirected to the Google Play download page of the Thermolabo Android app.

Click on – install - to proceed with the installation.

You can also download the app directly from the Play Store by typing "Thermolabo" in the application search bar.

We invite you to rate and comment on the application.

Play Store Icon :



3. Open the application

Open the Thermolabo app and place your Smartphone against the recorder (2X).

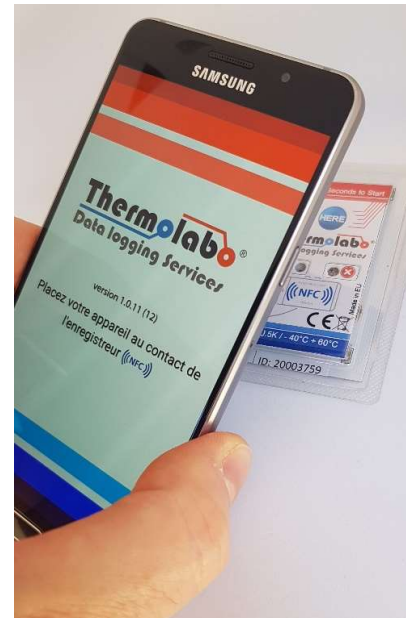
Your smartphone has an internal NFC antenna that, depending on the model, can be positioned at the center, at the top or bottom of your device.

Set the best contact area by browsing the back (or front) sides of your smartphone with the recorder.

You will be redirected to the main screen where you can get access to recorder information.

Remember that short-range NFC technology requires Sensolabo to be positioned directly below the NFC antenna of your Smartphone / Player with a maximum distance of 5 cm between the two.

To get benefits of all the functionalities and to enhance your experience, we recommend authorizing the application to get access to your GPS position as well as the contents and files of your device.



4. Thermolabo App – Essential Informations

Once the recorder is nearby the Smartphone, you will go directly to the main page of the application. You will be able to:

Start, restart or stop recording.

Visualize recorder setup and external information.

Visualize temperature graph and data

Get recorder information.

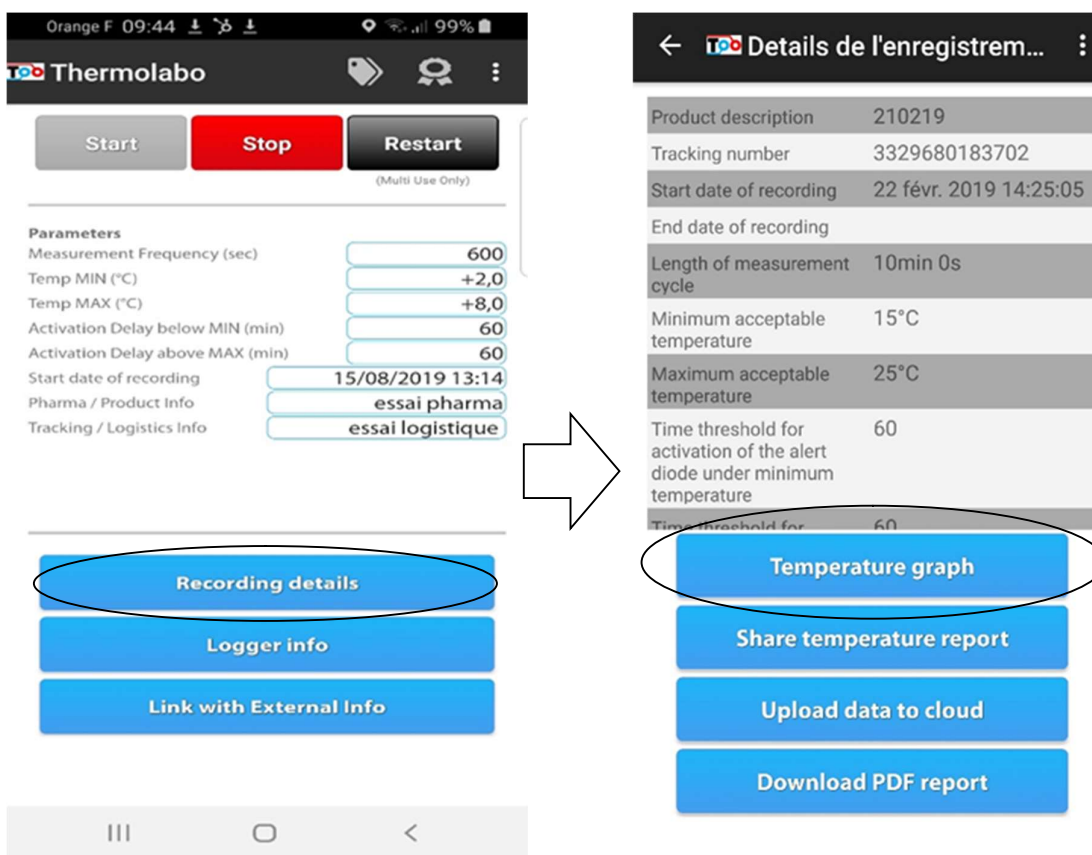
Link External Information



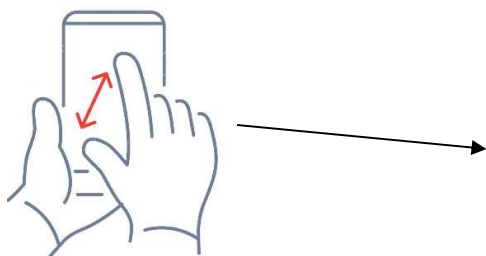
Part 1 – READ DATA

Reading data and downloading PDF reports

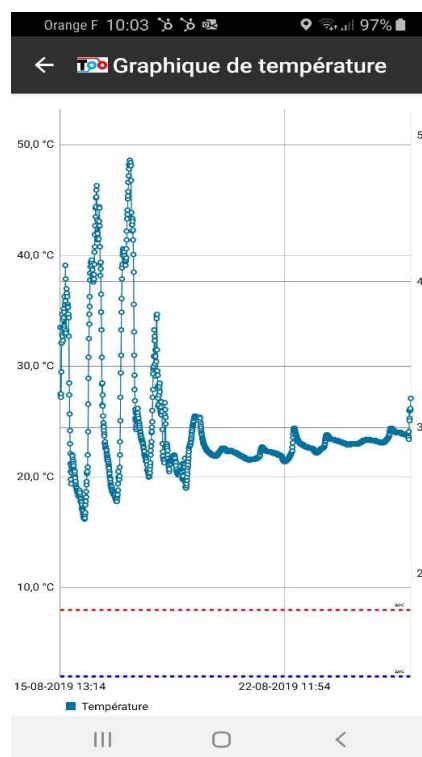
To access the dynamic graph and temperature data, click on - Recording Details - on the main application page and then click - Temperature Graph -.



You can adjust the zoom level by pinching the screen or spreading the fingers directly on the graph.



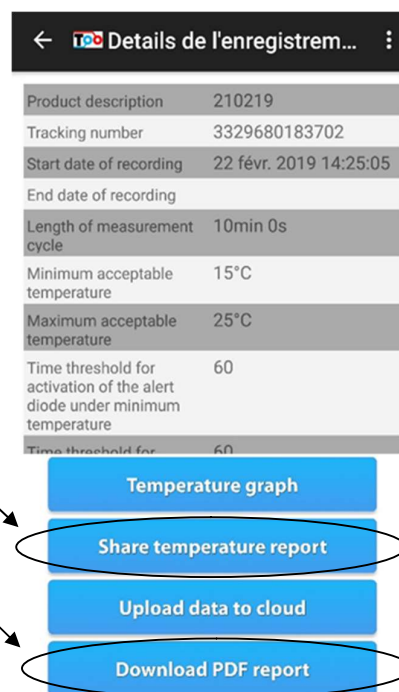
The PDF report is automatically downloaded and accessible from your Smartphone. You can find it from the 'Download History' folder and 'Documents' in the 'My Files' folder.



Depending on the possibilities offered by your Smartphone, you can then share the report and data by e-mail, SMS message, Dropbox, Bluetooth and download them to your computer, or send them to a connected printer.

To do that, click on – Share temperature report -

If you want to download the PDF report again from the app on your smartphone, click on - Download PDF report -.



Part 2 – LINK EXTERNAL INFORMATION

Link data manually or scan barcodes

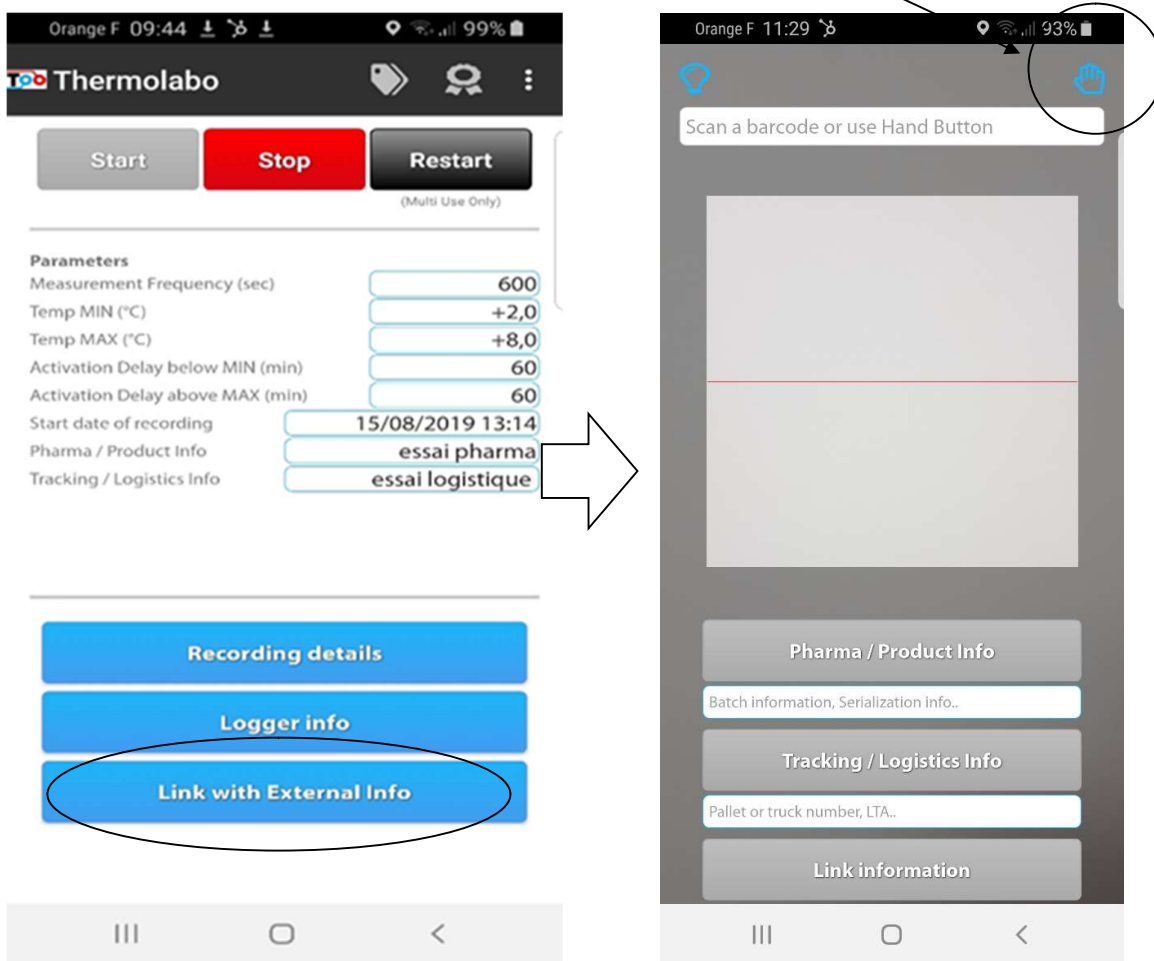
In addition to the initial programming, you can associate external data to your Sensolabo® recorder when its status is:

- Waiting for manual start with the button or delayed start
- In recording operation (When shipping, in transit or at reception by the consignee).

It is not possible to associate data with a stopped recorder. The associated data is geolocated to easily identify the author of the data addition.

To link with external data, click on – Link with External Info –

Then, to capture data, scan your barcode or click on the Hand icon



Then, Follow the next steps:

Step 1

Type your text or scan your barcode



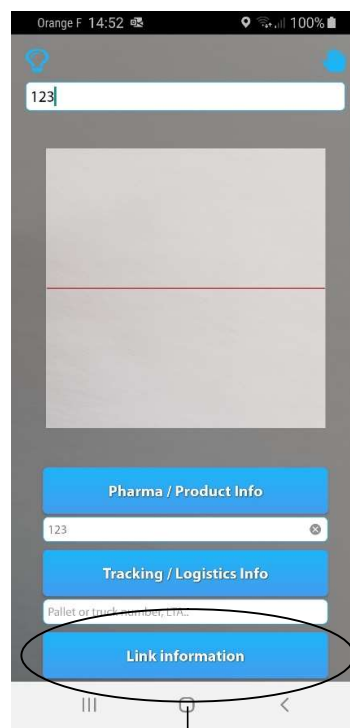
Step 2

Select the information field type (Pharma info or logistic info)



Step 3

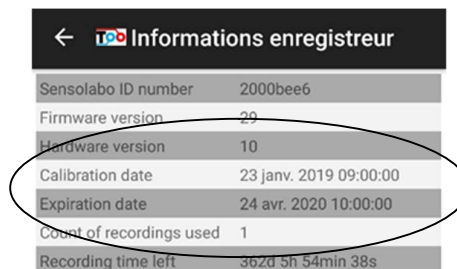
Click on – Link information – then, place your Smartphone against the recorder to allow the transfer of the setting information.



Part 3 – ADDITIONAL INFORMATION

1 Expiration date

The button - Recorder information - on the first page of the application gives you the possibility to access useful information related to the device - ID number of the recorder, firmware and hardware versions, date of calibration and expiration and also the number of record cycles that have already been performed (Multi-use)

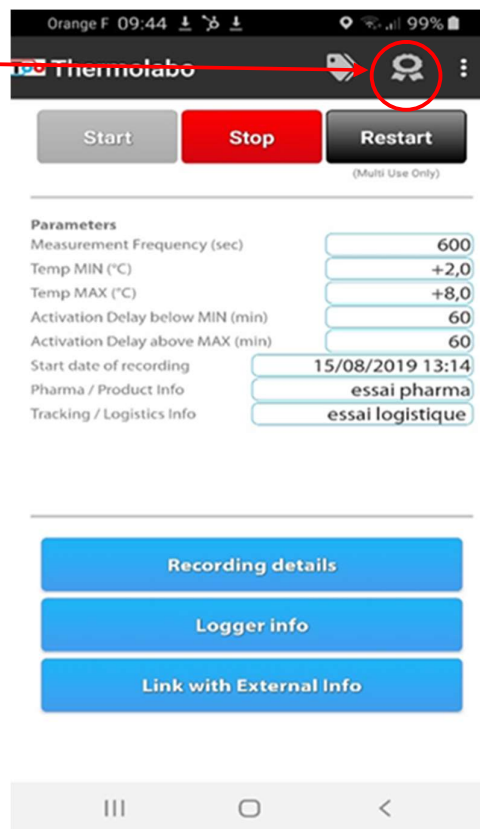


← Informations enregistreur	
Sensolabo ID number	2000bee6
Firmware version	29
Hardware version	10
Calibration date	23 janv. 2019 09:00:00
Expiration date	24 avr. 2020 10:00:00
Count of recordings used	1
Recording time left	362d 5h 54min 38s

2 Calibration Certificat

To download the calibration certificate provided individually for each recorder, Click on the Diploma icon in the upper right corner of the main screen.

The PDF calibration certificate is automatically downloaded and accessible from your smartphone. You can find it from the 'Download History' folder and 'Documents' in the 'My Files' folder.



Orange F 09:44 99%

Thermolabo

Start Stop Restart (Multi Use Only)

Parameters

Measurement Frequency (sec)	600
Temp MIN (°C)	+2,0
Temp MAX (°C)	+8,0
Activation Delay below MIN (min)	60
Activation Delay above MAX (min)	60
Start date of recording	15/08/2019 13:14
Pharma / Product Info	essai pharma
Tracking / Logistics Info	essai logistique

Recording details

Logger info

Link with External Info

TECHNICAL DATA

Temperature scale	°C (°F in option)
Temperature range	-40°C to +60°C
Measurement interval	From 10 sec to 2 hours
Memory capacity	From 5,000 to 48,000 measurements
Recording Time	De 36 days to 1 year
Resolution	0.1°C
Accuracy between 0 and 30 ° C	± 0.2°C
Precision on the rest of the range	± 0.4°C
Dimensions	80 x 50 x 2.5 mm
Weight	10g
Protection Class	IP 67
Time	UTC
Required equipment	NFC / Android
Shelflife	1 year
Lifetime after recording end	2 years

HOW TO ? VIDEO

We also invite you to consult our video tutorials for a better experience with Sensolabo®.



Type "Sensolabo" on Youtube or click on the links below:

[Start Sensolabo®](#)

[Read data using the application](#)

[Obtaining the calibration certificate](#)

[Using the private cloud console for data management](#)